

*MAJESTY*  *YACHTS*



SUPERYACHT COLLECTION

---



**125**

*MAJESTY 125*

---







Main Saloon







## Dining Area

The sophisticated design of the Majesty 125 includes an outstanding interior, which features carefully selected wooden, leather and marble finishes and panelling. The attention-to-detail on this superyacht is unrivalled, every fixture and fitting is a showpiece down to the high-quality hand-fitted furniture.



Main Deck Lobby



Main Galley



Owner's Stateroom



Top . Owner's En Suite | Bottom . Gym



Double Guest Stateroom



Double Guest En Suite

The magnificent Majesty 125 is an immaculate superyacht designed for private getaways and effortless entertaining. The powerful 38m Majesty 125 has been built with the owner's preferences in mind, with a strong focus on luxury, performance and comfort.



Wheelhouse





Upper Deck Saloon



### Fly-bridge Seating Area

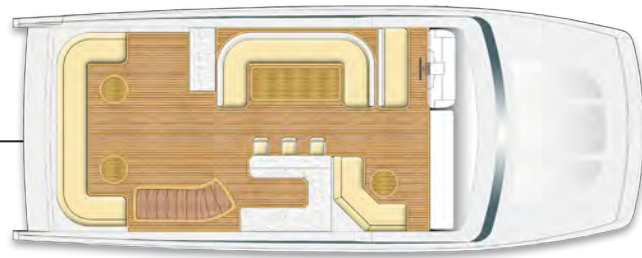
Spend your time socialising and relaxing with nothing but the awe-inspiring ocean around you on one of the many lounging and entertainment spaces across three decks. Make the most of the ocean view by dining Al Fresco or stay cool on the private spa deck, which offers 360 degree views of your glorious surroundings.



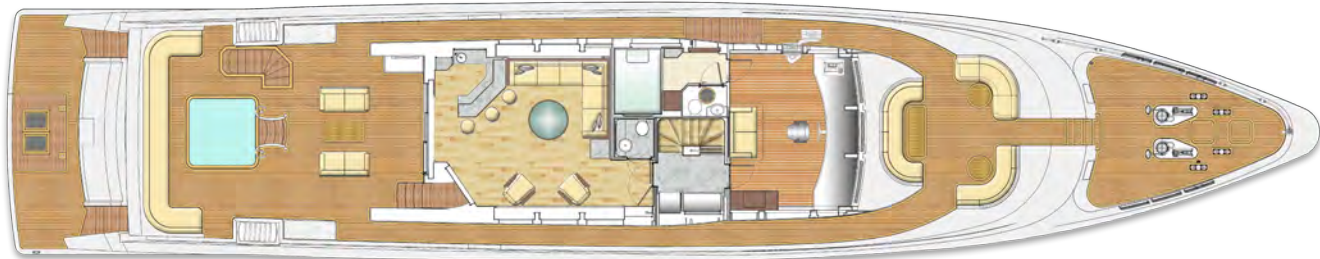
Upper Deck Seating with Jacuzzi



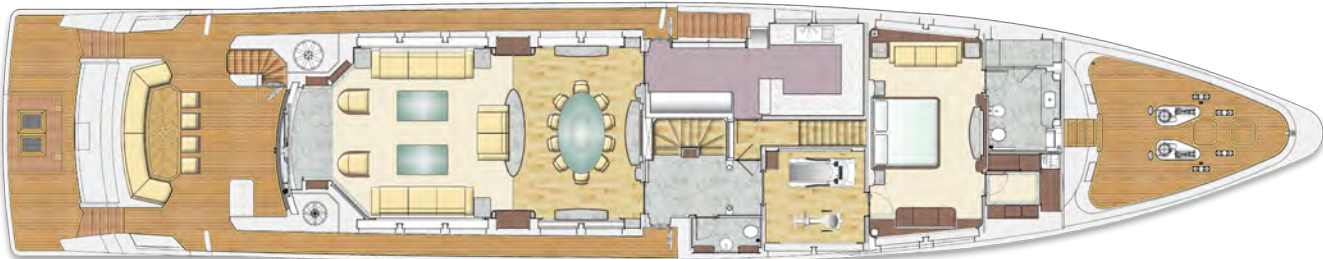




FLY-BRIDGE



UPPER DECK



MAIN DECK



LOWER DECK

---

# TECHNICAL SPECIFICATIONS

LENGTH OVERALL	128 FT 11 IN (39.30 M)
BEAM	24 FT 8 IN (7.50 M)
DRAFT	6 FT 6 IN (2.00 M)
DISPLACEMENT	210 T APPROXIMATELY
FUEL CAPACITY	8,270 US GAL (31,310 L)
FRESH WATER CAPACITY	1,040 US GAL (3,940 L)
BLACK WATER CAPACITY	740 US GAL (2,800 L)
GREY WATER CAPACITY	720 US GAL (2,730 L)
GENERATORS	2 X 80 KW, 50 HZ
ENGINES	2 X 2,600 HP 2 X 1,900 HP

Please note this is the technical specifications of Majesty 125. Gulf Craft reserves the right to add, modify or delete specifications and features at any time as part of our continuous product improvement programme.

---

Please note this is the technical specifications of Majesty 125. Gulf Craft reserves the right to add, modify or delete specifications and features at any time as part of our continuous product improvement programme.

#### DECK FITTINGS

- Side pantograph door on Port and Starboard side.
- Hydraulic Anchor windlass with hand controls (2).
- Stainless steel bow guard and anchor pockets.
- Anchors 125kg (2).
- Chains for anchors - Length: 120M, Diameter: 14mm (2).
- Capstans and pop-up cleats at aft cockpit (2).
- Stainless cleats on forward area (4).
- Stainless pop-up cleats on swim platform (2).
- Hawser pipes (8).
- Deck hatch access to chain locker.
- Fresh water deck wash outlets.
- Safety glass side windows.
- Front wind screen.
- Wind screen wipers with fresh water washing system.
- Teak wood fitted on swim platform, cockpit and side decks.
- Self draining.
- Lighting around the side decks.
- Upholstered Sofa seats and table at aft cockpit.
- Upholstered Sofa seats and table at forward area (3).
- Stainless steel guard railing at main deck gunnel, upper deck gunnel, forward area and fly-bridge.
- Fenders baskets.
- Fuel and Water filters and Black tank overboard discharge on side deck.
- Name board with lighting.
- Stainless steel flagpole on upper deck aft.
- Hydraulic door for stern garage.
- Round shape portholes.

#### MAIN DECK AFT COCKPIT

- Cockpit lighting.
- Stainless steel handrails.
- Self Draining.
- Stainless steel framed sliding door to Saloon.
- Storage within aft seat moulding.
- Integral stairway to upper deck with teak treads.
- Bathing platform.
- Stairs to garage and engine room.
- Speakers connected to main saloon (2).
- Pop-up cleats (2).
- Capstans located in aft cockpit (2).
- Stainless steel Transom doors with signage 125.
- Cockpit table.
- Steps to bathing platform.
- Cockpit stainless steel supports to upper deck.
- Port and Starboard side bulwark doors at aft and mid ship.
- Hot/Cold water hand shower.
- Deck wash at forward, aft and upper deck.
- Television and telephone connections.
- Locker with Fire damper pull-pin cables, Emergency fuel shutoff valve pull-pin cable, Engine room fire cylinder pull-pin cable.
- Locker with fire hydrant valve and fire hose reel with nozzle.
- Television and telephone connections.
- 3-Phase, 125Amps dock side connection with 30 meter length cable and cable master system.
- Fresh water input and out let.
- Upholstered sofa seats.

- Pop-up cleats on bathing platform (2).

#### UPPER DECK COCKPIT

- Stairway from lower deck cockpit.
- Stainless steel railing.
- Liferrafts capacity 16 persons (2)
- Dining table with seating.
- Teak decking.
- Corian counter top.
- Sink and tap with hot and cold water supply.
- Fridge and Ice maker.
- Patio door.
- Upholstered sofa seats.
- Stairway to fly-bridge.
- Self draining.

- LED TV 42".
- Satellite receiver.
- Stairway from upper deck.
- Stainless steel framed wind deflector screen.
- Fiberglass hard top.
- Lighting under hard top.
- Stainless steel railings.
- Fully-fitted wet bar with corian top.
- Bar stools (3).
- Tap with hot and cold water supply.
- Fridge.
- Ice maker.
- Dining table with seating.
- "U" shaped sofa seating and table.
- Port and starboard side sofa seats and tables.
- Upholstered sofa seating.
- Electric barbecue.
- Storage under the sofa seats.
- Deck lights and flood lights.
- Port and starboard side navigation lights.

#### FLY-BRIDGE HELM

- Steering wheel.
- Engine throttle.
- Port and starboard side engine rpm gauges.
- Rudder angle gauge.
- Trim tab gauge.
- Navigation displays (2).
- Wind displays.
- Auto pilot.
- Port and starboard side engine controls.
- Bow thruster control.
- Windlass controls.
- Trim tab switches.
- Light switches.
- VHF Radio and hand set.
- MCU 001 Key board controls (2).

#### MAST

- Platform for radar and aeriels.
- Lighting arrester.
- Anchor light.
- Mast head light.
- GPS Antenna.
- VHF Antenna.
- Forward search light.
- Not Under Command light 1.
- Not Under Command light 2.
- Aft Search light.
- Radars.
- TV Satellite.

#### SALOON

- LED TV 58".
- Home Theater system (Life style 48 Series).
- Satellite Receiver.
- Stainless steel framed sliding door to cockpit.
- Sofa seats.
- Sofa side tables.
- Wooden flooring.
- Fitted carpet and wood surround.
- Side windows with curtains, roman and pleated blinds.
- Architectural lighting.
- Cabinet lighting.
- Lighting switches and AC sockets.
- Air conditioning with control switch.
- Telephone point.
- Corian counter top.
- Curtains for main saloon door.
- Port and Starboard side wall cabinets with shelves.
- Aft storage lockers with shelves.
- Fabric/Leather wall panels.

#### DINING AREA

- Dining table.
- Chairs (10).
- Cabinets with doors and drawers.
- Marble counter top lockers.
- Glassware and cutlery.
- Architectural lighting.
- Lighting switches and AC sockets.
- Air conditioning with control switch.
- Wooden flooring.
- Lighting under hard top.
- Door to galley and family dining.
- Door to main deck lobby.
- Fabric/Leather wall panels.

#### GALLEY

- Lockable water tight door leading to port side deck.
- Corian counter top.
- Vinyl flooring.
- Sink and tap with hot and cold water supply.
- Cabinets, Overhead lockers and drawers.
- Refrigerator.
- Freezer.
- Hob.
- Fryer and Grill.
- Hood.
- Oven and Microwave oven.
- Dish washer.
- Wine cellar.
- Waste disposer.
- Architectural lighting.
- Lighting switches and AC sockets.
- Air conditioning with control switch.
- Family dining table with stools.
- Windows with pleated blinds.
- Telephone point.
- Entrance door to crew stairs and main lobby access door.

#### MAIN DECK LOBBY

- From dining area to dayhead, owner's office, owner's cabin and stairs down to lower deck.
- Watertight side door leading to Starboard side deck.
- Marble flooring.
- Architectural lighting.
- LED lighting to steps.
- Lighting switches and AC sockets.
- Storage locker.
- Door to day head toilet.

#### DAY HEAD TOILET (MAIN DECK AND UPPER DECK)

- Vanity locker with Marble counter top.
- Wash basin and Tap with hot and cold water supply.
- Sanitary accessories.

- Mirror.
- Electric toilet.
- Extractor fan.
- Architectural, vanity and cabinet lights.
- Lighting switches and AC sockets.
- Marble flooring.
- Towel storage and product shelf.

#### OWNER'S OFFICE

- Desk.
- Chair.
- Sofa seat.
- Storage locker and open shelves.
- Fitted carpet.
- Window with Roman blinds and pleated blinds.
- Architectural and cabinet lighting.
- Lighting switches and AC sockets.
- Air conditioning with control switch.
- Fabric/Leather wall panels.
- Door to owner's cabin.

#### OWNER'S STATEROOM

- LED TV 50".
- Home Theater system (Life style 48 Series).
- Satellite Receiver.
- Large double bed with drawers (4) & mattress, pillows and bedspread.
- Fitted carpet.
- Bed side lights.
- Bed side cabinets.
- Desk.
- Chair.
- Window with roman blinds and pleated blinds.
- Storage cabinets and drawers.
- Storm shutter storage.
- Reading, architectural and cabinet lighting.
- Lighting switches and AC sockets.
- Air conditioning with control switch.
- Telephone points.
- Entrance door to En Suite.
- Entrance door to walk-in-closet.
- Fabric/Leather wall panels.

#### EN SUITE

- Wash basins and taps with hot and cold water supply (2).
- Bath tub.
- Storage cabinets and drawers.
- Mirror.
- Architectural, cabinet and vanity lighting.
- Shower light.
- Lighting switches and AC sockets.
- Shower cabin with frosted glass door.
- Hot and cold water shower mixer.
- Sky shower.
- Bidet & Electric toilet.
- Sanitary accessories.
- Extractor Fan.

#### OWNER'S WALK-IN- CLOSET

- Storage lockers.
- Window with curtain.
- Fitted carpet and wood surround.
- Wardrobe.
- Triptique mirror.
- Architectural lighting.
- Cabinet lighting.
- Lighting switches and AC sockets.
- Shelves and drawers.
- Fabric/Leather wall panels.

#### GUEST LOBBY

- Stairs from main deck.
- Sub distribution panel locker.
- Storage below stair case.
- Storage locker below distribution panel.
- Entrance door to port double guest cabin.
- Entrance door to starboard double

- guest cabin.
- Entrance door to port twin guest cabin.
- Entrance door to starboard twin guest cabin.
- Marble flooring.
- Architectural and cabinet lighting.
- Lighting switches and AC sockets.
- Veneer wall panels.

#### DOUBLE GUEST STATEROOMS (STARBOARD & POST SIDE)

- LED TV 40".
- Satellite Receiver.
- Large double bed with two drawers.
- Twin bed side tables.
- Storm shutter storage.
- Wardrobe.
- Shelves.
- Desk.
- Side window and porthole with roman blinds and pleated blinds.
- Fitted carpet and wood surround.
- Reading, architectural and cabinet lights.
- Lighting switches and AC sockets.
- Air conditioning with control switch.
- Entrance door to En Suite.
- Fabric/Leather wall panels.
- Porthole with roman and pleated blinds.
- Telephone point.\*

#### EN SUITE

- Vanity locker.
- Wash basin and tap with hot and cold water supply.
- Storage locker.
- Mirror.
- Towel storage.
- Architectural, vanity and cabinet lighting.
- Shower light.
- Lighting switches and AC sockets.
- Bidet and Electric toilet.
- Sanitary accessories.
- Glass door for shower cabin.
- Hot and cold water shower mixer.
- Sky shower.
- Shelf in shower cabin.
- Port hole with wooden blinds.
- Marble flooring.

#### TWIN GUEST STATEROOMS (STARBOARD AND PORT SIDE)

- LED TV 26".
- Satellite Receiver.
- Single beds with drawers (2).
- Storm shutter storage.
- Bed side table.
- Wardrobe.
- Reading, architectural and cabinet lights.
- Lighting switches and AC sockets.
- Air conditioning with control switch.
- Fitted carpet.
- Entrance door to En Suite.
- Fabric/Leather wall panels.
- Porthole with roman and pleated blinds.
- Telephone point.

#### EN SUITE

- Vanity locker with marble counter top.
- Wash basin and tap with hot and cold water supply.
- Storage locker with shelves.
- Mirror.
- Towel storage.
- Architectural, vanity and cabinet lighting.
- Shower light.
- Lighting switches and AC sockets.
- Bidet and Electric toilet.
- Sanitary accessories.
- Glass door for shower cabin.
- Hot and cold water shower mixer.
- Sky shower.

- Shelf in shower cabin.
- Port hole with wooden blind.

#### UPPER DECK LOBBY

- From Panoramic saloon to dayhead, wheelhouse and stairs down to main deck.
- Marble flooring.
- Audio/Video storage locker.
- Storage locker.
- Steps down to main lobby.
- LED lighting to steps.
- Architectural and cabinet lighting.
- Lighting switches and AC sockets.
- Wash basin and tap with hot and cold water supply.
- Fridge.
- Entrance door to wheelhouse.
- Entrance door to day head toilet.
- Entrance door to Panoramic saloon.

#### MAIN HELM

- Helm seat with fore and aft adjustment system.
- Port and starboard side engine displays.
- Bow thruster control.
- General alarm.
- Fire detection alarms.
- Search light controls.
- Port and Starboard side engine room exhaust fan controls.
- Compass.
- Steering wheel.
- Horn switch.
- Engine Throttle.
- Auto pilot.
- Wiper controls.
- Whistle control.
- Port and starboard Anchor winch controls.
- Stabilizer display.
- Navigation displays.
- Port and Starboard side engine parameter gauges.
- Trim tab gauges and control switches.
- Rudder angle indicator.
- Navigation lights panel.
- VHF Radio hand set.
- Bilge pumps switches.

#### PANORAMIC SALOON

- LED TV 58".
- Satellite Receiver.
- Bar counter.
- Sink and Tap with hot and cold water supply.
- Bar stools (5).
- Storage lockers and drawers.
- Fridge.
- Sofa seat and table.
- Sofa side table.
- Round dining tables with chairs.
- Wooden flooring.
- Patio door to upper deck aft cockpit.
- Architectural and cabinet lighting.
- Lighting switches and AC sockets.
- Air conditioning with control switch.
- Fabric/Leather wall panels.
- Side windows with roman blinds and wooden blinds.

#### CAPTAIN'S CABIN

- LED TV 22".
- Satellite Receiver.
- Large double bed with drawer.
- Bed side table.
- Storage under the bed.
- Wardrobe.
- Windows with roman blinds and pleated blinds.
- Reading, architectural and cabinet lighting.
- Lighting switches and AC sockets.
- Air conditioning with control



- switch.
- Entrance door to En Suite.
- Fitted carpet.
- Telephone point.

#### EN SUITE

- Vanity locker.
- Wash basin and tap with hot and cold water supply.
- Electric toilet.
- Storage lockers wardrobe.
- Hot and cold water shower mixer.
- Port hole with curtain.
- Mirror.
- Architectural and cabinet lighting.
- Shower light.
- Lighting switches and AC sockets.
- Sanitary accessories.
- Extractor fan.
- Marble flooring.

#### CREW GALLEY & LOUNGE

- LED TV 32".
- Satellite Receiver.
- Stairs from main deck.
- Stainless steel hand rail.
- Fridge.
- Washing/Dryer.
- Microwave oven.
- Hob.
- Storage locker.
- Corian counter top.
- Storage lockers with shelves.
- Stainless steel sink and tap with hot and cold water supply.
- Overhead lockers.
- Open shelves.
- Air conditioning with control switch.
- Porthole with pleated blinds.
- Vinyl flooring.
- "U" shaped sofa seat and table.
- Storage lockers above the sofa.
- Architectural & counter lighting.
- Lighting switches and AC sockets.
- Telephone point.

#### CREW CABINS (1 & 2)

- Bunk beds (2).
- Wardrobe.
- Porthole with roman blinds.
- Air conditioning with control switch.
- Reading, architectural and cabinet lights.
- Lighting switches and AC sockets.
- Veneer/Fabric/Leather wall panels.
- Vinyl flooring.
- Entrance door to En Suite.
- Telephone point.

#### EN SUITE

- Vanity counter with corian top.
- Electric toilet.
- Sink and tap with hot and cold water supply.
- Storage locker.
- Mirror.
- Hot and cold water mixer and shower.
- Sky shower.
- Architectural lighting.
- Lighting switches and AC sockets.
- Sanitary accessories.

#### CREW CABIN 3

- Beds (2).
- Wardrobes (2).
- Air conditioning with control switch.
- Vinyl flooring.
- Reading, architectural and cabinet lights.
- Lighting switches and AC sockets.
- Port holes with pleated blinds.
- Lockable water tight entrance door to crew lounge.
- Veneer/Fabric/Leather wall panels.
- Entrance door to En Suite.

#### EN SUITE

- Vanity with corian counter top.
- Sink and tap with hot and cold water supply.
- Storage locker.
- Mirror.
- Electric toilet.
- Hot and cold water shower mixer.
- Sky shower.
- Architectural lighting.
- Lighting switches and AC sockets.
- Sanitary accessories.

#### STERN GARAGE

- Electro- hydraulic power operated garage door.
- Lockable gas/water tight door to engine room.
- Stairs to side deck.
- Hydraulic pump for garage door.
- Fire hydrant valve with hose reel and nozzle.
- Port holes.
- Storage locker.
- Garage door control box.
- Sink and tap with hot and cold water supply.
- Washer/Dryer.
- Ceiling Crane 500kg capacity.

#### ELECTRICAL SYSTEM

- Electrical system of the boat is 3-phase, 380/415V, 50Hz (limiting fluctuations in shore power voltage to +/- 4%).
- Main shore power supplied by two generators (2 x 80Kw Generators, Northern lights).
- 3-phase dockside connection (100Amp) with Cable master system.
- Telephone and television dockside connection.
- Power management and load sharing protection system.
- Battery isolation switches.
- 12V, 200Amp Batteries for Port side Engine (2).
- 12V, 200Amp Batteries for Starboard side Engine (2).
- 12V, 100Amp Batteries for Port side Generator (2).
- 12V, 100Amp Batteries for Starboard side Generator (2).
- 12V, 200Amp Batteries for Service (2).
- 12V, 200Amp Batteries for Machinery (2).
- 12V, 200Amp Batteries for Emergency (2).
- Batteries are charged by five battery chargers.
  - 24V, 100Amp Battery charger for Service/Machinery batteries.
  - 24V, 100Amp Battery charger for Port and Starboard engine batteries.
  - Emergency battery charger 24V, 80Amp.
  - 24V, 30Amp Battery charger for Port and Starboard Generator batteries.
- Main switch board system equipped with magnetic contactors, overload protections and short circuit protections.
- 380/415V panel is equipped with the following apparatus for each generator.
  - Volt meter with select switch.
  - Frequency indicator.
  - Ampere meter with current transformers.
  - Watt meter.
  - Signal light on.
  - Signal light alarm.
  - Signal light disconnect.
- For shore connections:
  - Volt meter with select switch.
  - Ampere meter with current transformers.
  - Phase sequence meter.
  - Signal light connect.
  - Signal light disconnect.

- Signal light shore energized.
- For 24V system:
  - Voltmeter for general service battery.
  - Voltmeter with change over switch for the starting batteries.
  - Ampere meter.
- Outgoing circuits protected by circuit breakers.
- All motors to be 220V, single phase and 380/415V, 3-phase, 50 Hz.
- All cables to be color coded.
- Protection to the phase line sequence.
- Secondary distribution panels are placed at:
  - Main deck (Pantry).
  - Lower deck (Lobby).
  - Wheel house (AC panel).
  - Wheel house (Navigation DC panel).
- Main panel in wheelhouse contain following:
  - Navigation lights.
  - Deck lighting.
  - Navigation equipments.
- All the lighting systems are 2-pole, 24V DC and 220V AC.
- 220V AC power outlets in all cabins.
- Navigation lights according to the international regulations.
  - Navigation lights (red and green).
  - Stern light.
  - Head on mast.
  - Anchor light on mast.
  - NUC Light -1.
  - NUC Light - 2.
- Tank senders for all tanks.
- Emergency lighting for all cabins.
- Exhaust fans (3- phase) for engine room (2).
- All seacocks under the water line are grounded.

#### POWER AND DRIVE SYSTEM

- Hydraulic Bow thruster 80HP.
- TRAC 440 Stabilizing system.
- Direct shaft drive through tunnels.
- Propellers, 5-bladed, AB2 material (2).
- P-brackets (2).
- Rudders (2).
- Duplex steel tail shafts (2).
- Seawater strainers for main engines and generators.
- Hydraulic trim tabs (2).
- Cathodic protection provided by zinc anodes.

#### FUEL SYSTEM

- Total Fuel capacity 7,595 US Gallons (28750.20 Liters).
- All tanks provided with manholes, fill pipes, ventilation pipes, and connection pipes to manifold.
- Manual fuel shutoff valve.
- Racor fuel filters for generators.
- Electric fuel transfers pump 380V/3-phase.
- Fuel levels are visible on monitoring panel.
- Fuel sight level gauges to fuel tanks.
- Manual fuel pump.
- Isolation valves to fuel manifold.
- Fuel fillers on Port and Starboard side deck.
- Fuel lines are made of stainless steel.
- Fuel pipe connections to engines/generators by flexible hoses/ stainless steel pipes.

#### FRESH WATER SYSTEM

- Fresh water tank capacity 1500 US Gallons (5,678.11 Liters).

- AC fresh water pumps 230V, 50Hz (2).
- Pressurized hot and cold water system.
- Marine standard electric water heaters for hot water capacity 67Lts (4).
- Water heated by 240V immersion heater.
- GF piping throughout supplying all outlets.
- Filling and ventilations to side deck.
- Dock connection for shore water supply on aft swimming platform with pressure regulator.
- Handheld shower on swim platform with hot and cold water supply.
- Water makers 1800 Gallons/day, 380/415V, 3 phase, 50 Hz (2).
- Inline filters for fresh water system.

#### FIRE EXTINGUISHING SYSTEM

- Mechanical pump with bypass valves for Fire purpose (1).
- Fresh water line is connected to manifold for priming and cleaning system.
- Fire alarm connected with all cabins smoke sensors.
- Portable dry powder fire extinguishers in all cabins.
- FM 200 fire extinguishing system for engine room.
- Engine room fire extinguisher emergency handle fitted at aft cockpit recessed locker.
- Fuel shutoff valve emergency handle fitted at aft cockpit recessed locker.
- Engine room extractor fan emergency switches located at aft cockpit recessed locker.
- CuNiFer/Stainless steel pipes.
- Fire hydrant locations at:
  - Main deck forward.
  - Main deck Galley.
  - Main deck aft cockpit port side.
  - Garage.
  - Lower deck Guest Lobby.
  - Upper deck aft cockpit.

#### BILGE SYSTEM

- High water level alarm system for each water tight compartment.
- Automatic bilge pumps fitted in each water tight compartment (3700GPH).
- Bilge alarm panel at wheelhouse console.
- Fire line manifold system is installed in engine room.
- Mechanical pump with bypass valves for Bilge purpose (1).
- Hand operated bilge pump with bypass valves for suction of the bilges in each water tight compartment (1).
- Bilge lines are made of CuNiFer/ Stainless steel pipes.

#### NAVIGATION SYSTEM

- 19" Multi display monitors in the Main helm (2) with 17" monitors as repeaters at Flybridge (2).
- Raymarine (G19 Series)
  - GPS (2).
  - 72 Miles Radars (2).
  - Depth sounder (2).
  - Speed logs and wind speed.
  - Auto pilot (dual stations).
  - VHF Radio (dual stations).
- (Navigation system upgrade is available on request as optional)
- Mast Area – equipped with radars, satellite antenna, horn, wind speed, navigation lights,

- Lightening arrester, search light (Jabsco) fwd and aft, horn (T3 model).
- Camera (PAN/TLT/ZOOM) at Flybridge, Main deck Aft cockpit and two at Engine room.
- Alarm Monitoring System for all tanks, A/C Chiller pumps, Black water pump, Steering pump, Smoke detectors, Bilge Alarm, Navigation Lights, STP Alarm indication, Water maker, Fresh water pumps, Doors Windows and Hatches.

#### COMMUNICATION SYSTEM

- PABX system - (Intercom and telephone system provided with two lines and 16 channels), all cabins, pilot house, fly-bridge and engine room.
- SART (Search And Rescue Transponder.)
- EPIRB.
- Loud hailer.
- Provision for Antenna and Telephone (connection at shore power box).

#### LIFE RAFT AND SAFETY EQUIPMENTS

- Solas Life jackets (24)
- 24" Life rings (2).
- Life rafts capacity 16 persons (2)
- First Aid kit (2)
- Fire blanket (2)
- Fire dampers safety on Port and Starboard side vent shaft.
- Portable fire extinguishers as per plan.

#### AIR CONDITIONING SYSTEM

- Chilled water air conditioning system with capacity 400 000BTU.
- All compressors on 380/415VAC and handlers on 220VAC.
- Sea water pumps (2).
- Chiller water pumps (2).
- Chiller units, Chiller water pumps, Sea water pumps placed in engine room.
- All plumbing lines are made of PVC pipes.
- All plumbing lines are well insulated.
- Chillers sea water cooling plumbing lines are made of CuNiFer/stainless steel.
- A/C control switches in all cabins.

#### OPTIONALS

- Engine portable remote control for MTU engines.
- Aft cockpit TV.
- Alfa Laval fuel cleaning system.
- Sewage Treatment Plant.
- Hydraulic Passerella.
- Hydraulic swim platform Transformer.
- GMDSS for A2 system.
- Spare Propellers.
- Spare Shafts.
- Multi zone Audio/Visual + Automation system.
- Night vision camera system (FLIR or Equivalent).
- 12 x Under water lights.
- Stainless steel railings on swim platform.
- Dinghy and Jetski.
- Telephone input to PABX – (THURAYA/VSAT) by Client's Application.
- Electric curtains with switches and remote control.
- Sunshader at Flybridge.
- Navigation system upgrade (customer request).
- Navtex.



P.O. Box 666, Sheikh Khalifa Bin Zayed Street, Ajman, United Arab Emirates

T. +971 6 7406060, F. +971 6 7406062, [gci@gulfcraftinc.com](mailto:gci@gulfcraftinc.com)

**[www.gulfcraftinc.com](http://www.gulfcraftinc.com)**

**[www.majesty-yachts.com](http://www.majesty-yachts.com)**

V 02. 2017

---

Pictures in this catalogue may be taken from different vessels of the same type for example purpose only. Performance estimates are given in good faith, but are in no way guaranteed. Dirt on the hull, damage to the propellers, external water and air temperatures and added weight, fuel and water carried can all adversely affect performance. For these and other reasons we can give no performance guarantees. Data and characteristics are not binding: details, colors, descriptions and illustrations are for information purpose only. The drawings and pictures may include specific equipment or modifications which are not part of the standard specifications of the vessel. Standard specifications may be defined differently in different sales territories. Gulf Craft Inc. reserves the right to make any changes in specifications or equipment without prior notice. In case on any inconsistencies between specification sheet, product catalogue and price list, the price list prevails. Customers are recommended to contact one of our sales representatives to reconfirm standard and optional features on the vessels.



SETTING NEW STANDARDS OF LUXURY

by *Gulf Craft*

V 0.2 2017